

Aerodyne®

Rhino™ Rotary R Valve®



The Aerodyne Rhino Rotary "R" Valve is designed for continuous discharge of dry, free-flowing, low-abrasive solids in gravity flow or low-pressure systems. This rotary airlock valve is equipped with neoprene rubber-tipped rotor vanes, ensuring a superior seal and cost-efficient maintenance over steel rotor vanes. Widely used in applications such as the bottom of cyclonic dust collectors and baghouse hoppers, the Rhino Rotary "R" Valve's steel plate construction gives it a distinct advantage in quality, flexibility and durability over cast valves. Optional urethane tipped rotor vanes, explosion-proof drive motor, and stainless steel construction are also available upon request.

Standard Features

- Heavy Duty Steel Plate Fabrication
- Open Rotor
- 6 Vane Neoprene Tipped Rotor
- Chain Drive Right Angle Gearbox
- Available with TEFC Motor
- Outboard Bearings for Easy Maintenance
- Can Handle Temperatures to 175°F
- Max. 20" W.C.

Optional Features

- Stainless Steel Construction
- Urethane Tipped Rotor Vanes for better wear
- Explosion-proof Motor
- Custom Sizes Available
- Specialty valves are available upon request for hard-to-handle materials such as fiberglass.

Typical industries that use these valves include: foundry, mining, cement, pharmaceutical, cereal, plastics, chemical and manufacturing.



Aerodyne®
ENVIRONMENTAL

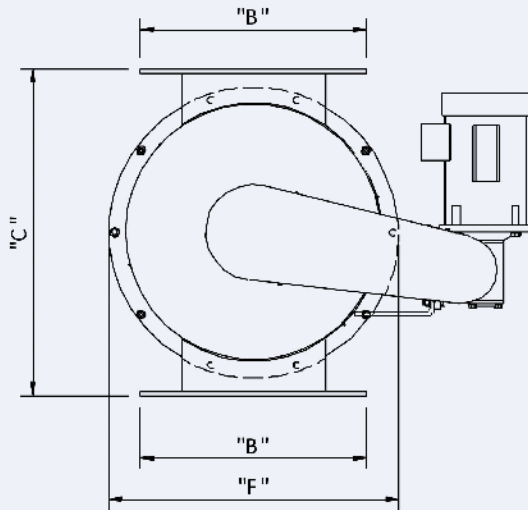
17387 Munn Road • Chagrin Falls, OH 44023

(440) 543-7400 • FAX: (440) 543-7404

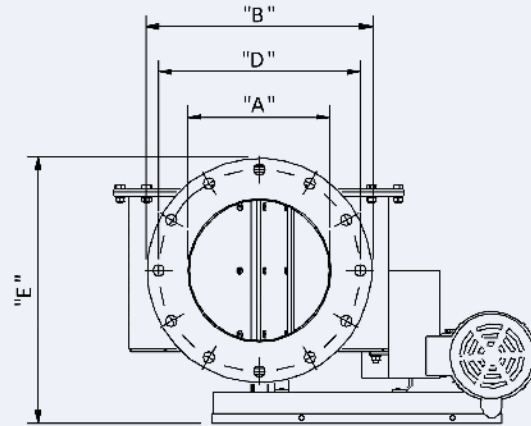
800-358-7546 • www.DustCollectorHQ.com

Aerodyne® Rhino™ Rotary R Valve

Rhino™ Rotary R Valve



SIDE VIEW



TOP VIEW

Model	HP	Cap/Rev Cu. Ft. per rev.	A ID	B OD	C	D BC	E Approx.	F OD
6	½	0.24	6	9.25	15	8	14.63	12.5
8	¾	0.63	8	11.25	19	10	16.63	16.5
10	1	1.30	10	13.25	23	12	18.75	20.5
12	1½	2.50	12	15.25	27	14	21.56	24.5
16	2	5.41	16	19.25	35	18	26.10	32.5

Normal running speed 20 RPM



17387 Munn Road • Chagrin Falls, OH 44023
 (440) 543-7400 • FAX: (440) 543-7404
 800-358-7546 • www.DustCollectorHQ.com